



Starway

ParKolor 200DW



User Manual

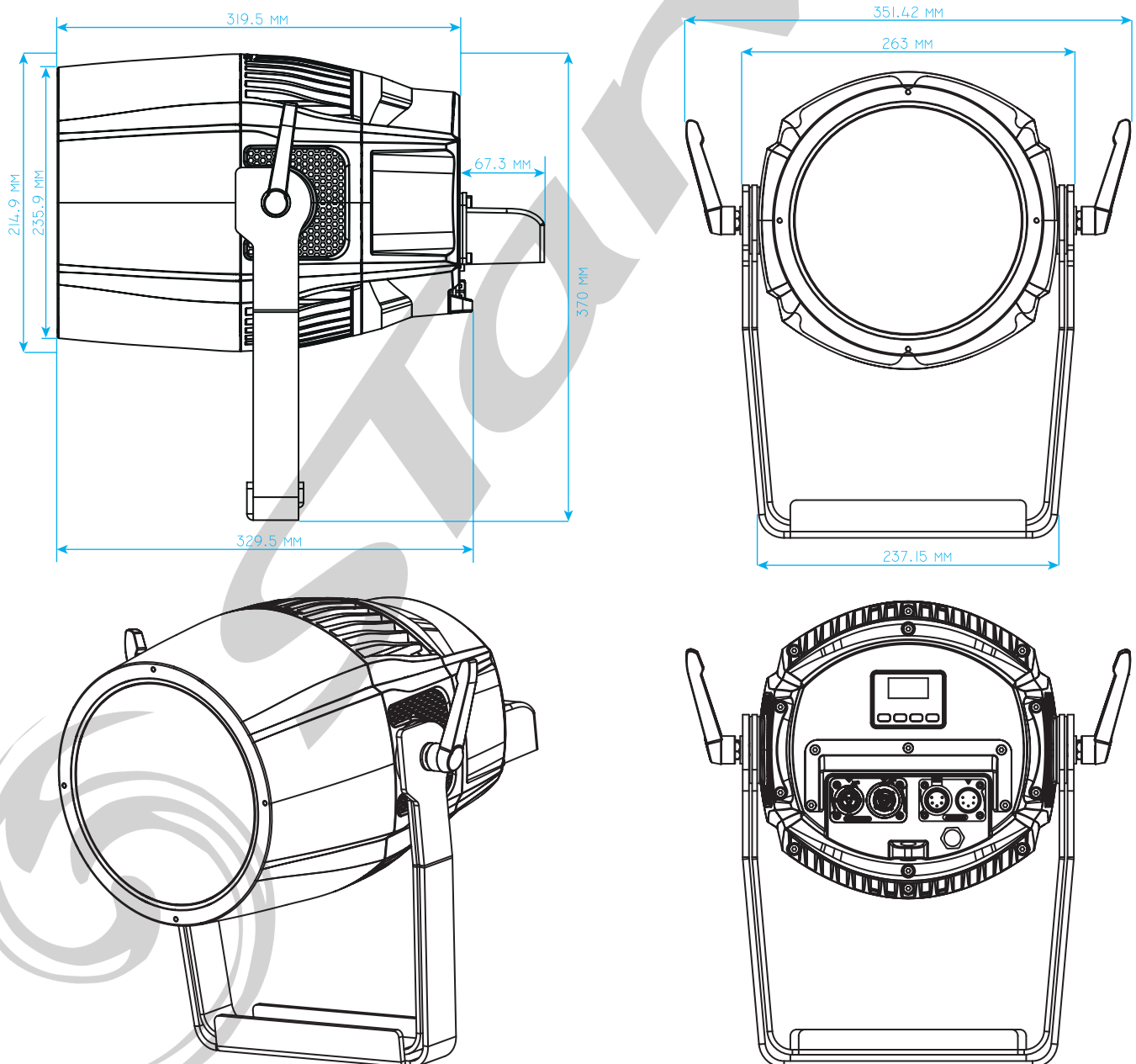
Table of content

| | |
|--------------------------------|----|
| Technical Specifications | 19 |
| Dimensions | 19 |
| Regulation and Safety | 22 |
| Photometry..... | 23 |
| Installation | 25 |
| DMX 512 use..... | 25 |
| Menu Structure..... | 26 |
| Display | 27 |
| Menu..... | 27 |
| DMX map..... | 30 |

TECHNICAL SPECIFICATIONS :

- Led COB 200W CW + 200W WW
- Zoom 10 ° - 47 ° beam
- Max flux : 18000 Lm
- Protocols: DMX / RDM
- DMX modes: 1/2/3-CCT/4/4-CCT/5/6/6-CCT/9ch
- Auto / Static / Master-Slave
- DMX Connectors In / Out : 2 x XLR5 IP65
- Power Connectors In / Out : Seetronic IP65
- Removable connector protection cap
- Cooling :
 - 1 natural convection mode
 - 3 forced ventilation modes
- Dimensions L x P x H: 329.5 x 215 x 370mm
- Weight: 10.3Kg
- Max power: 400W

DIMENSIONS :





WARNING!



Before carrying out any operations with the unit, carefully read this instruction manual and keep it with care for future reference. It contains important information about the installation, usage and maintenance of the unit.

SAFETY

GENERAL INSTRUCTION

- The products referred to in this manual conform to the European Community Directives and are therefore marked with CE:.
- The unit is supplied with hazardous network voltage (110/230V~). Leave servicing to skilled personnel only. Never make any modifications on the unit not described in this instruction manual, otherwise you will risk an electric shock.
- Connection must be made to a power supply system fitted with efficient earthing (Class I appliance according to standard EN 60598-1). It is, moreover, recommended to protect the supply lines of the units from indirect contact and/or shorting to earth by using appropriately sized residual current devices.
- The connection to the main network of electric distribution must be carried out by a qualified electrical installer. Check that the main frequency and voltage correspond to those for which the unit is designed as given on the electrical data label.
- Never use the fixture under the following conditions:
 - in places subject to vibrations or bumps;
 - in places with an ambient temperature of over 45° C.
- Make certain that no inflammable liquids, water or metal objects enter the fixture.
- Do not dismantle or modify the fixture.
- All work must always be carried out by qualified technical personnel. Contact the nearest sales point for an inspection or contact the manufacturer directly.
- If the unit is to be put out of operation definitively, take it to a local recycling plant for a disposal which is not harmful to the environment.

WARNINGS AND INSTALLATION PRECAUTIONS

- Never let the power cord come into contact with other cables! Handle the power cord and all connections with the mains with particular caution!
- Never modify, bend, mechanically strain, put pressure on, pull or heat up the power cord.
- Never strain the cable. There must always be sufficient cable going to the device. Otherwise, the cable will be damaged, which can cause serious damage.
- Never remove warning or informative labels from the unit.
- Never use anything to cover the ground contact.
- Never lift the device holding it by the projector-head, as the mechanics may be damaged
- Do not shake the device. Avoid brute force when installing or operating the device.
- Only operate the device after having checked if the housing is firmly closed and all screws are tightly fastened.
- Only operate the device after having familiarized with its functions.
- Avoid flames and do not put close to flammable liquids or gases.
- Always allow a free air space of at least 0.8 m around the unit for ventilation.
- Always disconnect power from the mains, when device is not used or before cleaning! Only handle the power cord holding it by the plug. Never pull out the plug by tugging the power cord.

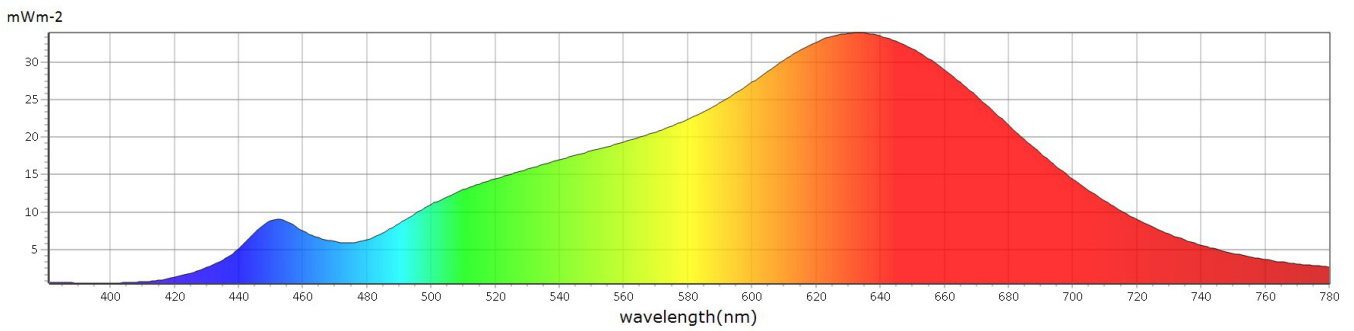
Photometry

| Distance 5 meters , Zoom Minimum | | |
|----------------------------------|-------------------|------|
| LED | Color Temperature | CRI |
| Warm White | 2700° K | 97.7 |
| Cold White | 6500°K | 94.8 |

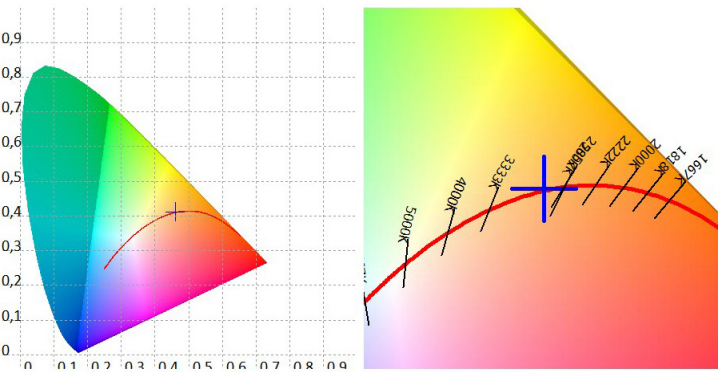
Lux Max @ 5m : 9062 Lux @ 10°
Lumen Max @ 5m : 18000 Lm

MEASUREMENTS MADE WITH USPECTRUM MK305S

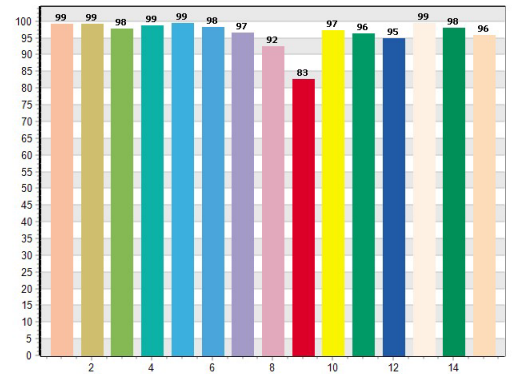
Warm White



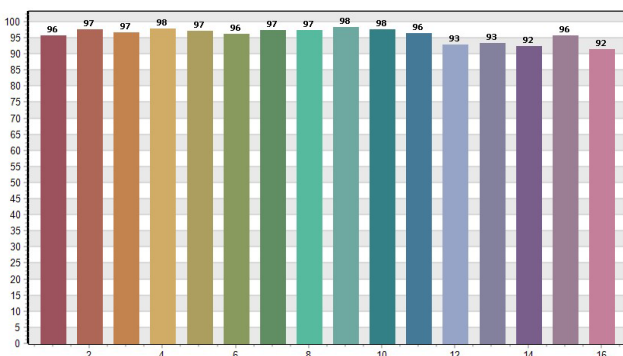
■ CIE1931



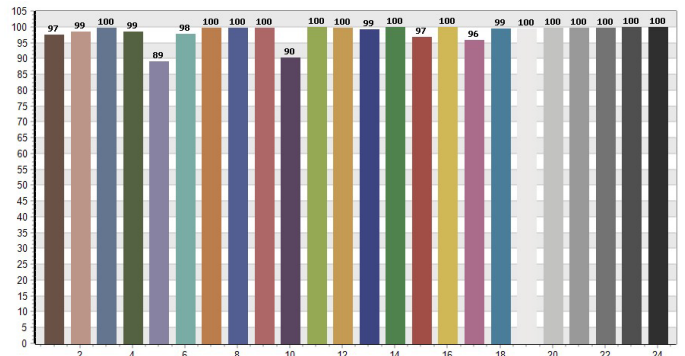
■ CRI: 97,69



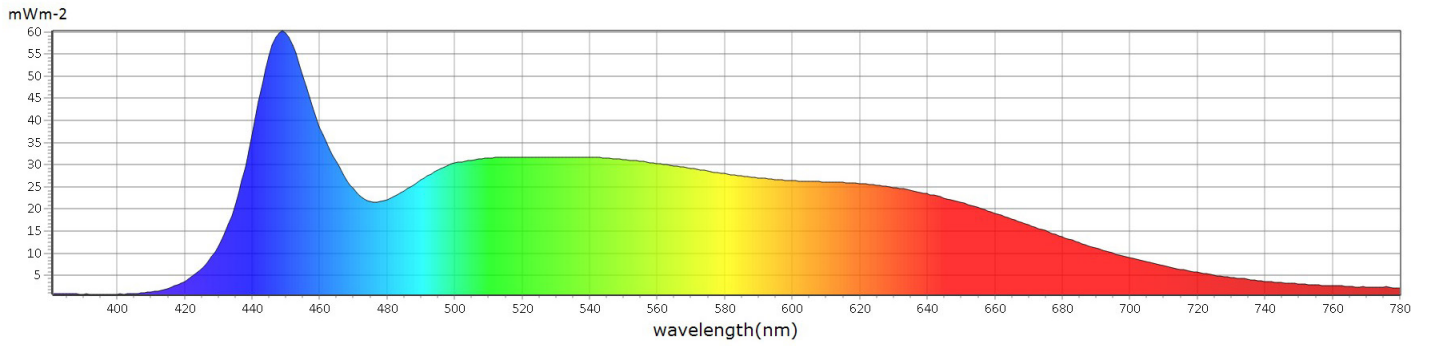
■ TM30: 96,50



■ TLCI: 97,09

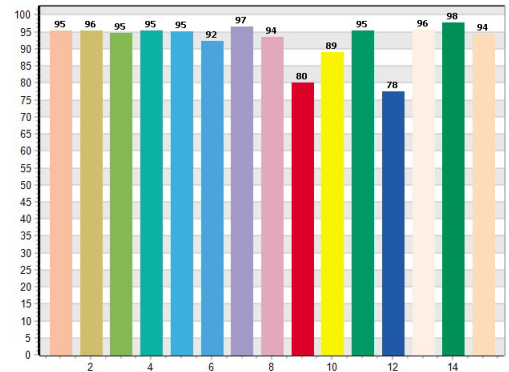
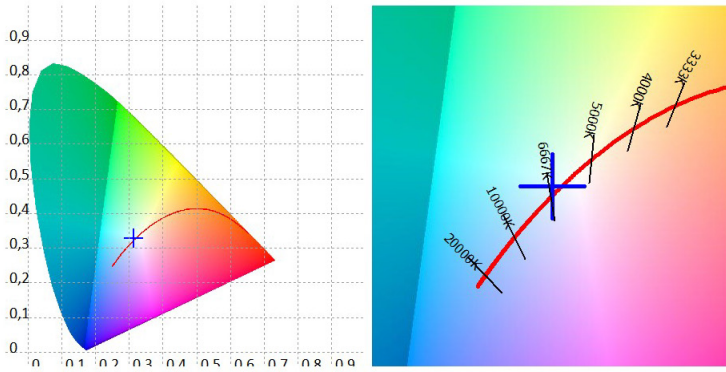


Cold White



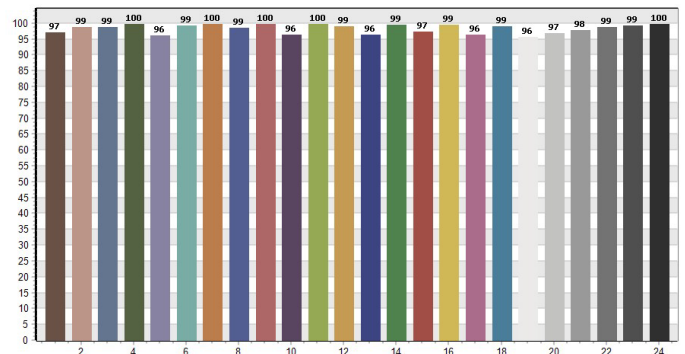
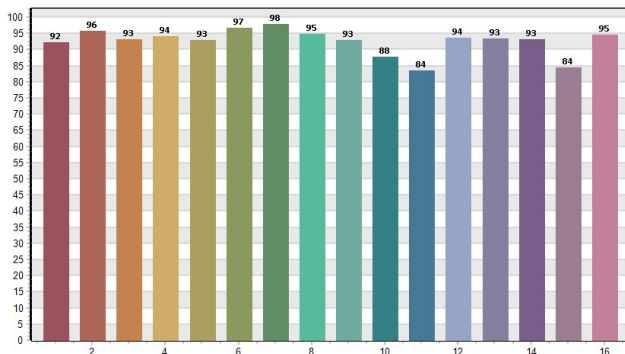
■ CIE1931

■ CRI: 94,81



■ TM30: 93,21

■ TLCI: 97,90

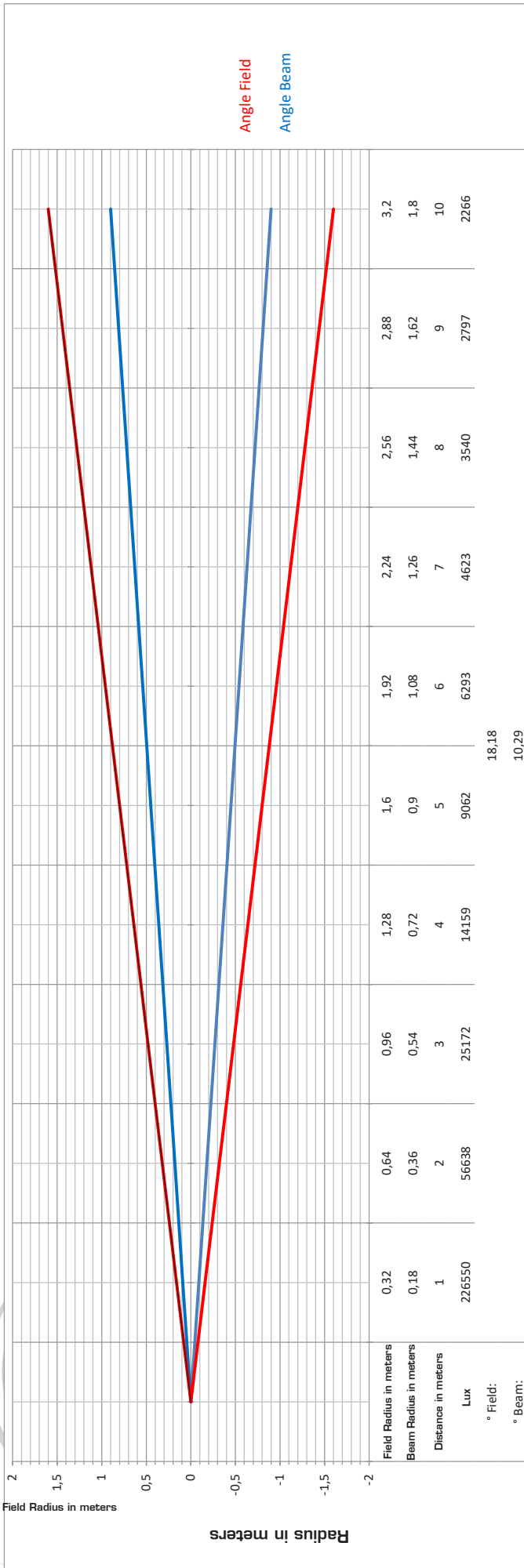


| Mesures photométriques | Regulated power OFF | | | | Regulated power ON | | | | | |
|------------------------|---------------------|-------------|---------------|------------|--------------------|------------|------------|------------|------------|------------|
| | All Fan mode | | Fan High/Auto | | Fan Quiet | | Fan OFF | | | |
| | Beam Angle | Field Angle | Lux center | Lumen Flux | Lux center | Lumen Flux | Lux center | Lumen Flux | Lux center | Lumen Flux |
| Zoom narrow | 10° | 18° | 9062 | 7330 | 5699 | 5300 | 5375 | 4400 | 3890 | 3541 |
| Zoom Medium | 24° | 39° | 3210 | 14000 | 2072 | 9345 | 1941 | 8600 | 1404 | 6100 |
| Zoom Wide | 47° | 61° | 1209 | 18000 | 768 | 11500 | 729 | 11000 | 527 | 8000 |

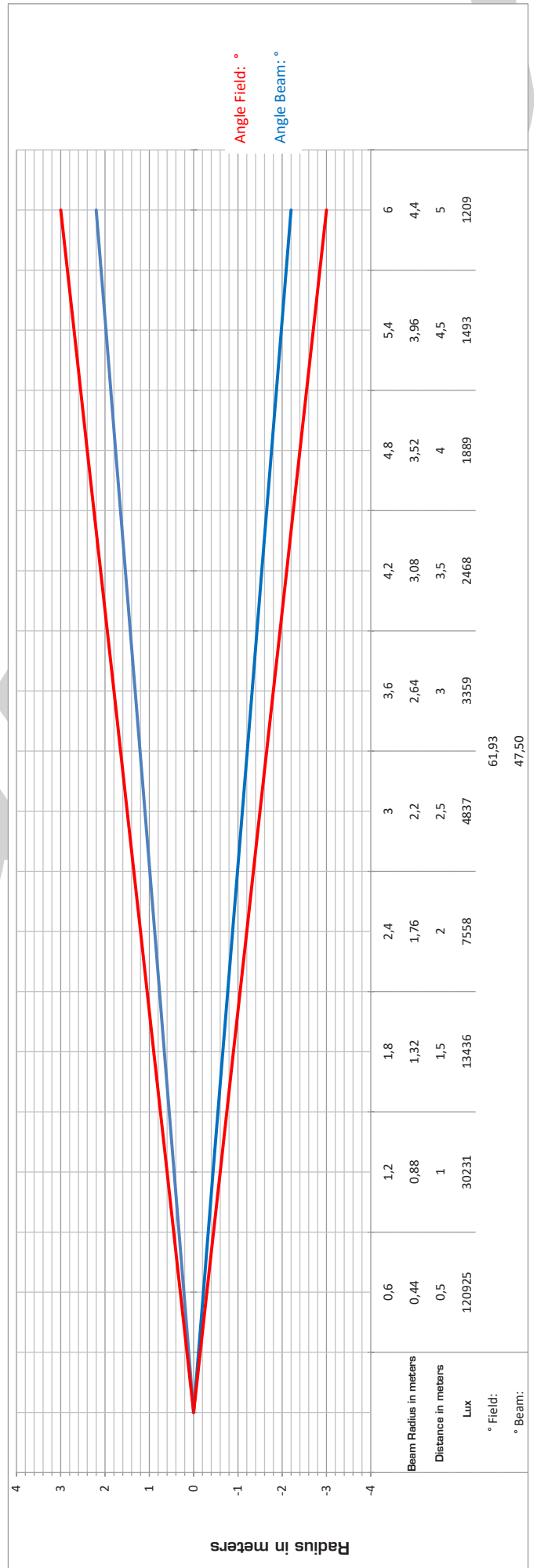
| IRC | | | | | | | | | | |
|------------|-------|-------|-------|-------|-------|-------|-------|-------|-------|-------|
| Color Temp | 2700K | 3000K | 3200K | 3500K | 4000K | 4500K | 5000K | 5600K | 6000K | 6500K |
| IRC | 97,8 | 97,5 | 97,3 | 97,2 | 97,2 | 97,3 | 96,9 | 96,9 | 95,9 | 94,8 |

| Power measurement according to color temperature | | | | | | | | | | | |
|--------------------------------------------------|---------------|-------|-------|-------|-------|-------|-------|-------|-------|-------|-------|
| | Color Temp | 2700K | 3000K | 3200K | 3500K | 4000K | 4500K | 5000K | 5600K | 6000K | 6500K |
| Regulated Power OFF | All Fan Mode | 206W | 236W | 258W | 300W | 390W | 331W | 243W | 234W | 214W | 202W |
| | Fan Auto/High | 206W | 236W | 243W | 243W | 250W | 244W | 243W | 236W | 213W | 202W |
| Regulated Power ON | Fan Quiet | 204W | 232W | 232W | 232W | 235W | 233W | 232W | 232W | 214W | 202W |
| | Fan OFF | 170W | 170W | 169W | 169W | 172W | 169W | 169W | 168W | 168W | 168W |

Angle Mini



Angle Maxi



Installation

Setup :

The projector can be mounted in any position and at any angle.

When placed, the surface supporting it must be able to withstand at least 10 times the weight of the projector and must be stable enough not to cause damage to the projector, people or surrounding objects.

When the projector is hung, systematically and obligatorily remember to secure it with a safety chain.



Electrical connection :

Under 230 VAC, 5 ParKolor 200DW can be connected with the IN and Out connectors.

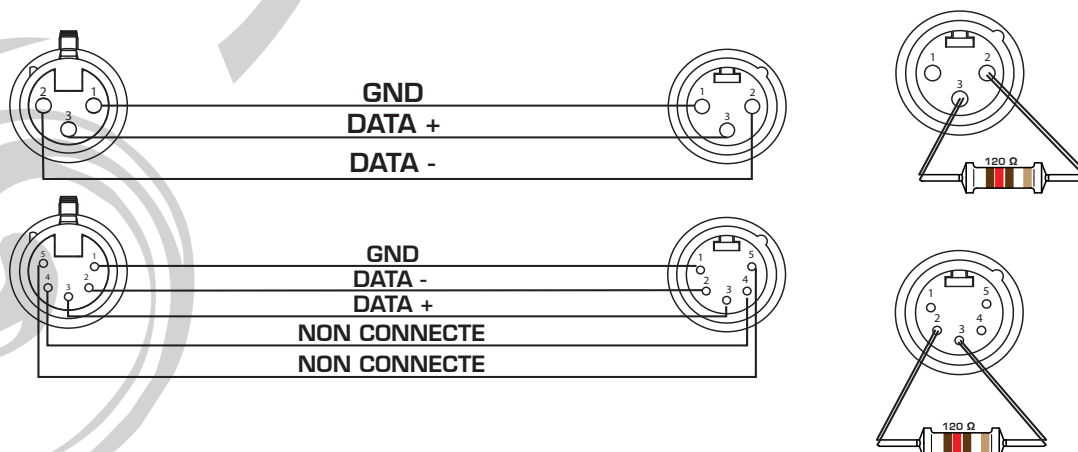
Under 110 VAC, 2 ParKolor 200DW can be connected with the IN and Out connectors.

DMX512 use

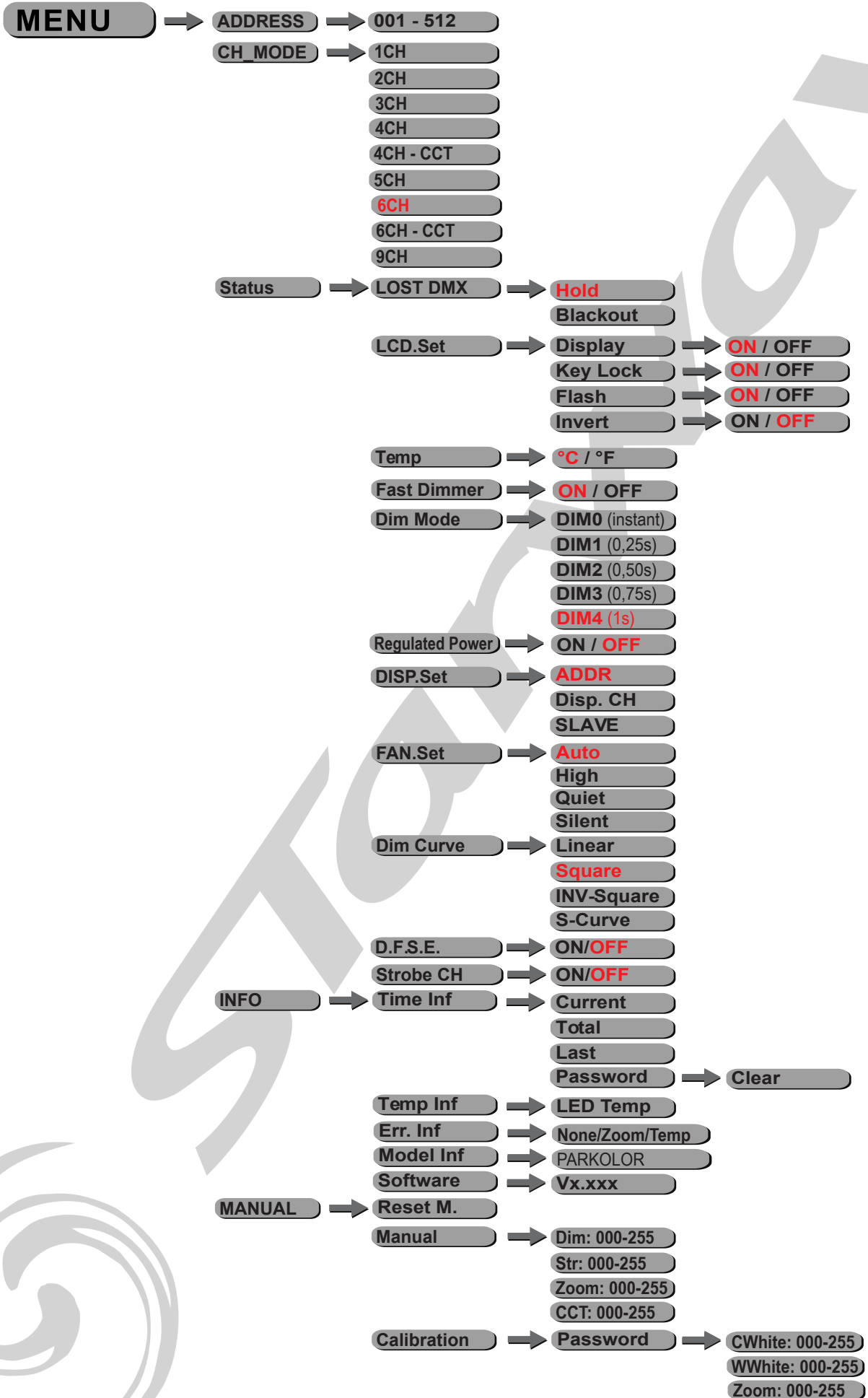
The use of a DMX amplifier is necessary if you use more than 20 interconnected units or a line longer than 60 m.

The use of a real DMX cable (120 ohms) makes it possible to avoid untimely loss of information. The use of a terminal plug is strongly recommended. In some cases, the absence of this termination is not a problem. On the other hand, its presence is very strongly recommended in disturbed spaces (Stage, long line length, TV studio, etc.). Its value is usually 120 Ohms. The cap is a male XLR socket in which is soldered, a resistance of 120 Ohms $\frac{1}{4}$ of W, between the pins 2 and 3 of the XLRs.

The cap prevents the reflection of transmitted information when using long cable lengths.

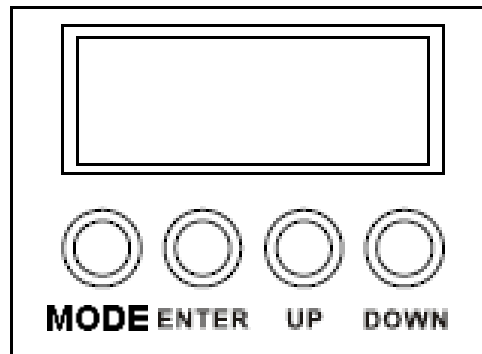


MENU STRUCTURE



The values shown in **RED** are the default values (reloaded after a DFSE)

DISPLAY



MODE: Scroll main menu or exit active submenu.

Enter: To enter the menu or confirm the active function or value.

Up: To scroll up in the menu or increase the value of the active function.

Down: To scroll down in the menu or decrease the value of the active function.

To unlock ParKolor 200 HD :
Press MODE for 3/5 seconds
To invert the PARKOLOR 200HD LCD
Press UP while the projector is locked

ADDRESS :

- Enter the DMX address using the **[UP]** and **[DOWN]** keys then validate using the **[ENTER]** key.

CH MODE :

- Choose the DMX mode 1CH, 2 CH, 3 CH, 4 CH, 4 CH CCT, 5 CH, **6 CH**, 6 CH CCT, 9 CH. using the **[UP]** and **[DOWN]** keys then validate using the **[ENTER]** key.

MENU STATUS

LOST DMX :

- Choose one of these two options when losing DMX signal :
 - **[Hold]** : keeps the last value in case of loss of the DMX signal.
 - **[BLACKOUT]** : Blackout when there is no DMX signal.

LCD.SET :

Enter this sub-menu to determine the behavior of the display

- Entrer the **[Display]** sub-menu, select **[ON]** or **[OFF]** to leave the display on or off.
- Entrer the **[KEY LOCK]** sub-menu, select **[ON]** or **[OFF]** to lock the keys (password : **UP, DOWN, UP, DOWN, ENTER**).
- Entrer the **[FLASH]** sub-menu, select **[ON]** or **[OFF]** to enable or disable the display flash function when there is no DMX signal.
- Entrer the **[Invert]** sub-menu, select **[ON]** or **[OFF]** to reverse the display direction.

TEMP :

- Choose temperature unit **[CELSIUS]** or **[FAHRENHEIT]**.

FAST DIMMER

Enter this sub-menu to bypass **[DIM Mode]** in case of rapid channel change from Dimmer to O.

- Choose **[ON]** or **[OFF]** to change dimmer behavior.

DIM MODE

Enter this sub-menu to set the speed of the Dimmer.

- Choisir **[DIM0]** for instant dimmer, **[DIM1]** for a 0,25 second dimmer speed, **[DIM2]** for a 0,5 second dimmer speed, **[DIM3]** for a 0,75 second dimmer speed, or **[DIM4]** for a 1 second dimmer speed.

REGULATED POWER

Enter this sub-menu to set the power mode:

To limit the power drop due to the rise of temperature, the power is limited as soon as ParKolor 200 DW is switched on according to the ventilation mode chosen.

Off mode : Max power 400W in all ventilation modes

On Mode:

Fan High > 250W - Fan Auto > 250W - Fan Quiet > 240W - Fan Silent > 170W.

- Choose **[ON]** ou **[OFF]** to select Regulated Power mode or not.

DISP.Set :

Enter this sub-menu to define the display mode

- **[ADDR]** to display the DMX adress.
- **[Disp.CH]** to display the DMX values.
- **[Slave]** to switch the PARKOLOR 200 HD to slave mode.

FAN.Set :

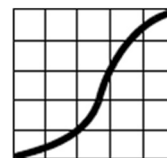
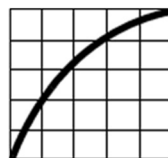
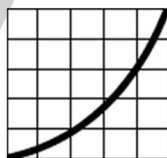
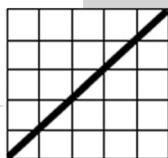
Enter this sub-menu to define the cooling mode

- **[Auto]** fans in automatic mode
- **[High]** fans in forced operation mode at 100%
- **[Quiet]** fans in silent mode
- **[Silent]** fans OFF

DIM CURVE

Enter this sub-menu to define the Dimmer curve.

- **[Linear]** - The increase in light intensity is linear as the DMX value increases.
- **[Square]** - Light intensity control is finer at low levels and coarser at high levels.
- **[Inv-Square]** - Light intensity control is coarser at low levels and finer at high levels.
- **[S-Curve]** - Light intensity control is finer at low and high levels and coarser at medium levels.



DFSE :

- Enter this sub-menu to reset the device to factory default.
(Reload the values shown in **red** in the menu structure)

STROBE CH :

Enter this sub-menu to select the behavior of the strobe channel:

- **[ON]** - LEDs are ON when the strobe channel is at 0.
- **[OFF]** - LEDs are OFF when the strobe channel is at 0.

INFO

[Time.Info] - Usage Time

- **[Current]** : Display of usage time (in hours) since last power-on.
- **[TotalTime]** : Display of usage time (in hours).
- **[Last]** : Display of the time of use (in hours) since the last time reset.
- **[PASSWORD]** : To access the usage time reset, you must enter a PIN code: 050 to reset **[Last]** value.
- **[Clear]** : **[ON]** to reset **[OFF]** to cancel

[Temp.Info] - Temperature display

- **[LED temp]** : xxx F or C - LED temperature display

[Err.Info] - sensor errors

- **[None]** : No error
- **[Zoom]** : Zoom Sensor error
- **[Temp]** : LED temperature sensor error

[Modellnf] - Displaying the projector model **[ParKolor 200 DW]**

[Software] - Firmware version display **[Vx.xxx]**

MANUAL :

[Reset.M] - Enter this sub-menu to reset the Zoom.

[ManCtrl] - Manual control

Allows you to create a luminous state. Adjust the following parameters to create a state.

Validate with **[Enter]** each parameter.

- **[Dimmer]** : from 000 to 255 adjust overall Intensity.
- **[Strobe]** : from 000 to 255 adjust the Strobe.
- **[Zoom]** : from 000 to 255 adjust the Zoom.
- **[CCT]** : from 000 to 255 adjust Color temperature.

NB : Zoom and CCT settings are also used for 1ch, 2ch, 3ch CCT and 4ch DMX modes.

[Calibrate]

Sub-menu allowing to recalibrate the various parameters of the ParKolor 200 DW.

To access this menu, you must enter the PIN code to unlock this function.

Pin Code : 050

This gives access to the various parameters.

- **[Zoom]** : de 000 à 255 calibrate the Zoom.
- **[CWhite]** : de 000 à 255 calibrate Cold White.
- **[WWhite]** : de 000 à 255 calibrate Warm White.

DMX MAP

| MODE | | | | | | | | | FUNCTION | |
|------|-----|-----|---------|-----|---------|-----|---------|-----|------------------------|----------------------------------------------|
| 1CH | 2CH | 4CH | 3CH CCT | 5CH | 4CH CCT | 6CH | 6CH CCT | 9CH | | |
| 1 | 1 | 1 | 1 | 1 | 1 | 1 | 1 | 1 | INTENSITY | |
| | | | | | | | | | 0-255 | 0% → 100% |
| | 2 | | | | | | 2 | 2 | INTENSITY FINE | |
| | | | | | | | | | 0-255 | 0% → 100% |
| | | | | 2 | 2 | 2 | 3 | 3 | SHUTTER | |
| | | | | | | | | | 0-5 | ON |
| | | | | | | | | | 6-10 | OFF |
| | | | | | | | | | 11-90 | Regular strobe from slow to fast |
| | | | | | | | | | 91-170 | Random strobe from slow to fast |
| | | | | | | | | | 171-255 | Synchronized Random strobe from slow to fast |
| | | | | 5 | 4 | 3 | 4 | 4 | ZOOM | |
| | | | | | | | | | 0-255 | 0% → 100% |
| | | | 2 | | 3 | | 5 | | CCT | |
| | | | | | | | | | 0-255 | WW → CW |
| | | 2 | | 3 | | 4 | | 5 | COLD WHITE | |
| | | | | | | | | | 0-255 | 0% → 100% |
| | | | | | | | | 6 | COLD WHITE FINE | |
| | | | | | | | | | 0-255 | 0% → 100% |
| | | 3 | | 4 | | 5 | | 7 | WARM WHITE | |
| | | | | | | | | | 0-255 | 0% → 100% |
| | | | | | | | | 8 | WARM WHITE FINE | |
| | | | | | | | | | 0-255 | 0% → 100% |
| | | | | | | | | | CONTROL | |
| | | | | | | | | | 0-10 | Idle |
| | | | | | | | | | 11-20 | Dim0 |
| | | | | | | | | | 21-30 | Dim1 |
| | | | | | | | | | 31-40 | Dim2 |
| | | | | | | | | | 41-50 | Dim3 |
| | | | | | | | | | 51-60 | Dim4 |
| | | | | | | | | | 61-70 | Regulated power On |
| | | | | | | | | | 71-80 | Regulated power Off |
| | | | | | | | | | 81-100 | Idle |
| | | 4 | 3 | | | 6 | 6 | 9 | 101-110 | Fan Silent |
| | | | | | | | | | 111-120 | Fan Quiet |
| | | | | | | | | | 121-130 | Fan auto |
| | | | | | | | | | 131-140 | Fan High |
| | | | | | | | | | 141-150 | Fast Dimmer off |
| | | | | | | | | | 151-160 | Fast Dimmer on |
| | | | | | | | | | 161-170 | Dimmer Curve Linear |
| | | | | | | | | | 171-180 | Dimmer Curve Square |
| | | | | | | | | | 181-190 | Dimmer Curve Inverse Square |
| | | | | | | | | | 191-200 | Dimmer Curve S-Curve |
| | | | | | | | | | 201-255 | Zoom Reset |

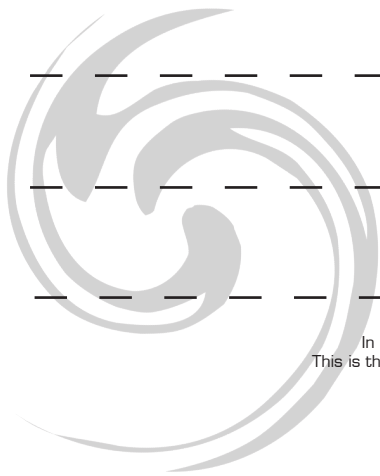
3CH CCT and 4CH mode: The Zoom position is set in the manual mode menu. For this you set directly on the menu or by RDM the good parameter.

1CH and 2 CH mode: The zoom and CCT value are set in the manual mode. For this you set directly on the menu or by RDM the good parameter.

NOTES

A series of horizontal dashed lines providing a template for taking notes.

In order to improve the products, technical modifications can be made without prior information.
This is the reason why the technical characteristics and the physical appearance of the products can change.
To benefit from the latest updates to our products, please log on to: www.star-way.com.



STARWAY

22 Rue Edouard Buffard

77144 Montevrain

France

Tél. : +33 (0)820 230 007

Fax : +33 (0)1 46 15 47 16

